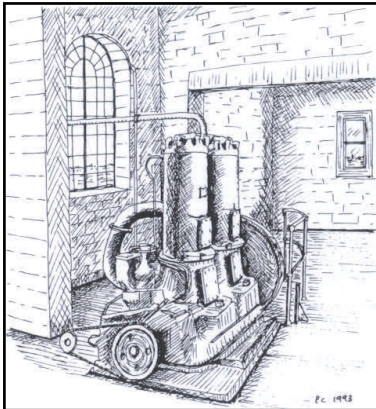


## GAYTON ENGINE HISTORY

The Gayton Engine Pumping Station was built and completed by H.M. Commissioners of Sewers in 1850, to pump the water from Gayton Fen and Marsh into the River Great Eau. Previously it had been drained by gravity through a set of sluice gates, known as Gayton Engine.

The power for pumping was originally steam, but in 1945 a diesel engine was introduced, and this is what survives in working order.

In 1956, the whole of the system of drainage in Theddlethorpe and adjoining areas was

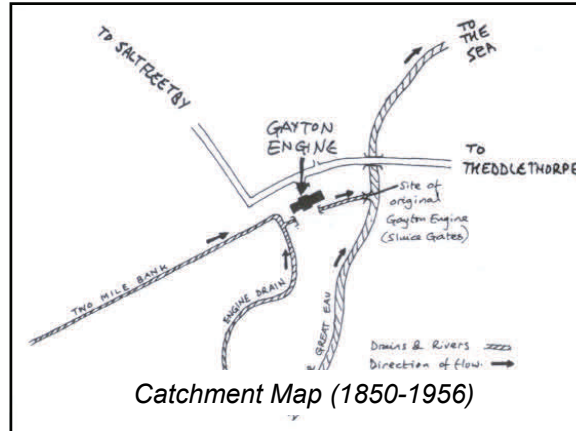


*View of pumping engine*

rearranged and a new electric pumping station, one third of a mile to the north-east, was constructed immediately alongside the Great Eau. The Gayton Engine Pumping Station was kept in repair, on standby, until the efficiency of the new pumps was assessed.

In the 1960s, the Board considered it would no longer be needed and the outfall to the river was allowed to be filled and the Station abandoned.

In the early 1970s the Board resolved not to demolish the Station but to carry out the minimal amount of maintenance on the building to preserve the engine and pump, in anticipation that interest would ultimately be attracted and a Society would undertake its refurbishment.



The present pumping equipment comprises: Petter "Atomic" 2-cylinder loop-scavenge 2 stroke ex-marine diesel engine, built in 1933, powering a 27" Gwynnes pump.

The Station is situated in the parish of Gayton le Marsh on the south side of the Great Carlton to Theddlethorpe highway (O.S. grid reference 458 880). It is a delightful white painted small building with arched Victorian windows and cannot be passed unnoticed.

The Gayton Engine Pumping Station is of interest to many, architects, engineers, historians, and stands in the marsh as a monument to our forefathers who first wrestled with the flooding from the rivers and sea, embanking and erecting sluices to contain and direct the waters, and then lifting flood waters by wind driven and then steam driven pumps into the rivers. Such work enabled a living to be obtained from land which otherwise would be marsh and bog.

A museum with articles of interest to land drainage has been prepared but further exhibits are welcome.

The Gayton Engine Preservation Society and a small band of supporters have renovated the pumping station which is now working and pumping water on open days.

### *Contributors and Sponsors:*

Rural Action for the Environment  
Lindsey Marsh Drainage Board  
Conoco Limited  
North Lincs Engineering

Recent repair and renovation works are thanks to:



Funded by



The European  
Agricultural Fund for  
Rural Development:  
Europe investing in  
rural areas



[www.lmdb.co.uk](http://www.lmdb.co.uk)

## GAYTON ENGINE PRESERVATION SOCIETY

The present Gayton Engine Preservation Society was formed in 1992 to preserve the Station and open it to the public succeeding the East Lindsey Marsh Villages Society, and is a registered charity. The Society's objects are to preserve and protect redundant structures and features connected with land drainage in East Lindsey for public interest.

At present, the sole concern of the Society is the Gayton Engine Pumping Station and with the work of its small band of supporters, with the backing of a number of bodies it has accelerated the work, started by the previous society, and the engine is now capable of being operated.

## MEMBERSHIP FEES

Annual Membership £5  
Life Membership £50

Further information and application forms for membership of the Society can be obtained from the Chairman of the Society, Mr A. Garland, telephone 01507 603017, or from the Treasurer, Mrs A. Freame, telephone 01507 443611.

## 2017 OPENING TIMES

2.00 p.m. - 4.00 p.m.

**Sunday, 14th May**

**Sunday, 18th June**

**Sunday, 23rd July**

(other engines also on display)

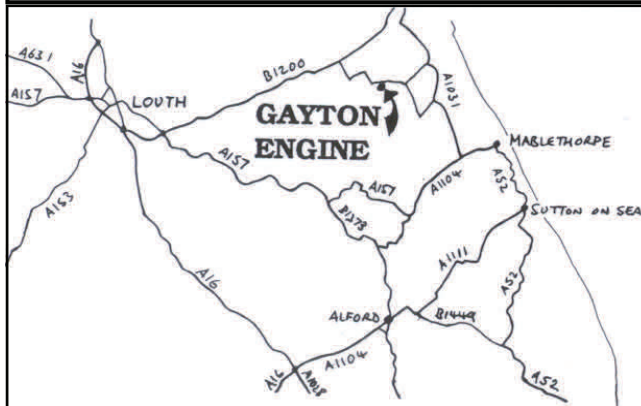
**Sunday, 20th August**

**Saturday 9th & Sunday 10th September**  
Heritage Weekend

Alternative dates can be arranged for group bookings. Please contact Mr A. Garland on 01507 603017 or Lindsey Marsh Drainage Board on 01507 328095 to make arrangements.

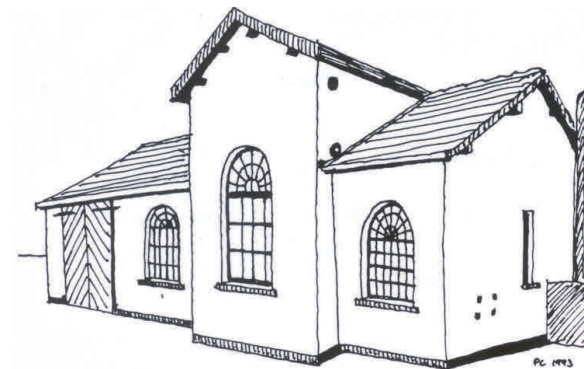
Contributions and donations welcome  
Free car parking and picnic site

## HOW TO FIND GAYTON ENGINE



Visit ...

## GAYTON ENGINE



## PRESERVED WORKING PUMPING STATION



GAYTON ENGINE  
PRESERVATION SOCIETY

Charity Commission Ref. 516204