

HISTORY

In the mid 1970's a new electric station was built with the diesels being retained on standby. By the early 1990's one diesel engine was a non-runner and the station was in need of considerable work.

At the request of the Lindsey Marsh Drainage Board, and with their considerable support, a small but dedicated group of volunteers was formed under the guidance of the late Dennis Quincey to both restore the station to its former glory and provide backup to the electric pumps in times of power failure.

Restoration of the station was begun in 1994 with priority being given to work on the non-running engine. Since then work has continued on the fourth Sunday of each month and the restoration is now well advanced with one engine being maintained on standby at all times.

The station has been called upon three times to run when power failure has hit the electric station, twice in the year 2000 and once in 2004.

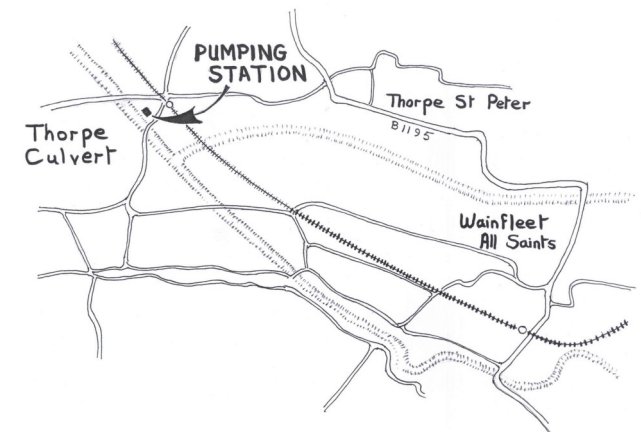
During the heavy rainfall in 2007 both diesel engines were run to assist the electric pumps.

Two open days are held when one engine is run at various times and visitors are welcome. Admission is free.

Following the death of Dennis Quincey in December 2002 the station was renamed Quincey's Pumping Station by the drainage board in his memory.

LOCATION

Thorpe Culvert Pumping Station is situated some two miles from Wainfleet on the Steeping River. The station, built in 1938, houses two Ruston and Hornsby 9XHRC diesel engines driving Gwynnes 36" centrifugal pumps with each pump being capable of delivering some 100 tons, or 22,400 gallons of water per minute.



CONTACTS

Mr A. Quincey (Chairman)
(01205) 870397

Mr F. Bateman (Secretary)
(01205) 356208

Mr P. Gash
(01529) 305121

Mr C. Millard
07747 890611

Mr E. Lupton (Treasurer)
(01526) 320209

LINDSEY MARSH DRAINAGE BOARD

Wellington House,
Manby Park, Manby,
LOUTH, Lincolnshire, LN11 8UU.
Telephone: 01507 328095
Facsimile: 01507 328097
E-mail: enquiries@lmdb.co.uk

2018

OPEN DAYS

Sunday, 22nd April
10 a.m. to 4 p.m.

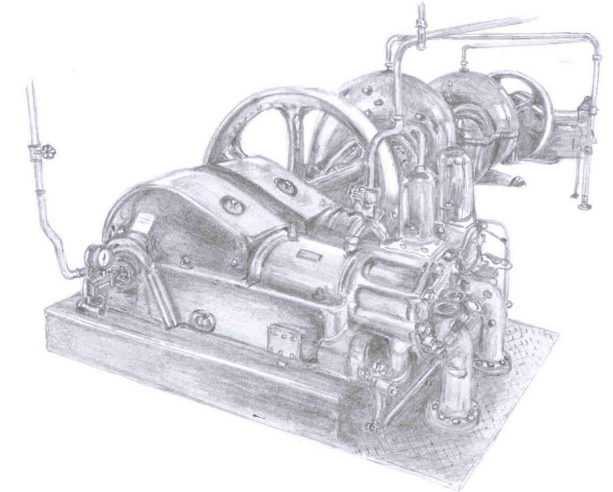
Sunday, 16th September
10 a.m. to 4 p.m.

Visitors are also welcome on the following
Sundays when the volunteers meet to
undertake maintenance of the pumps:

January 28th
February 25th
March 25th
May 20th
June 24th
October 28th
November 18th
December 9th

PLEASE TELEPHONE TO CONFIRM
OPENING DATES AND TIMES

THORPE CULVERT PRESERVATION



QUINCEYS PUMPING STATION

PE24 4NJ

ADMISSION FREE